

Standard configuration is with 4mm frame

ULTIME D_{Patented}

Metalfire

Technical Document

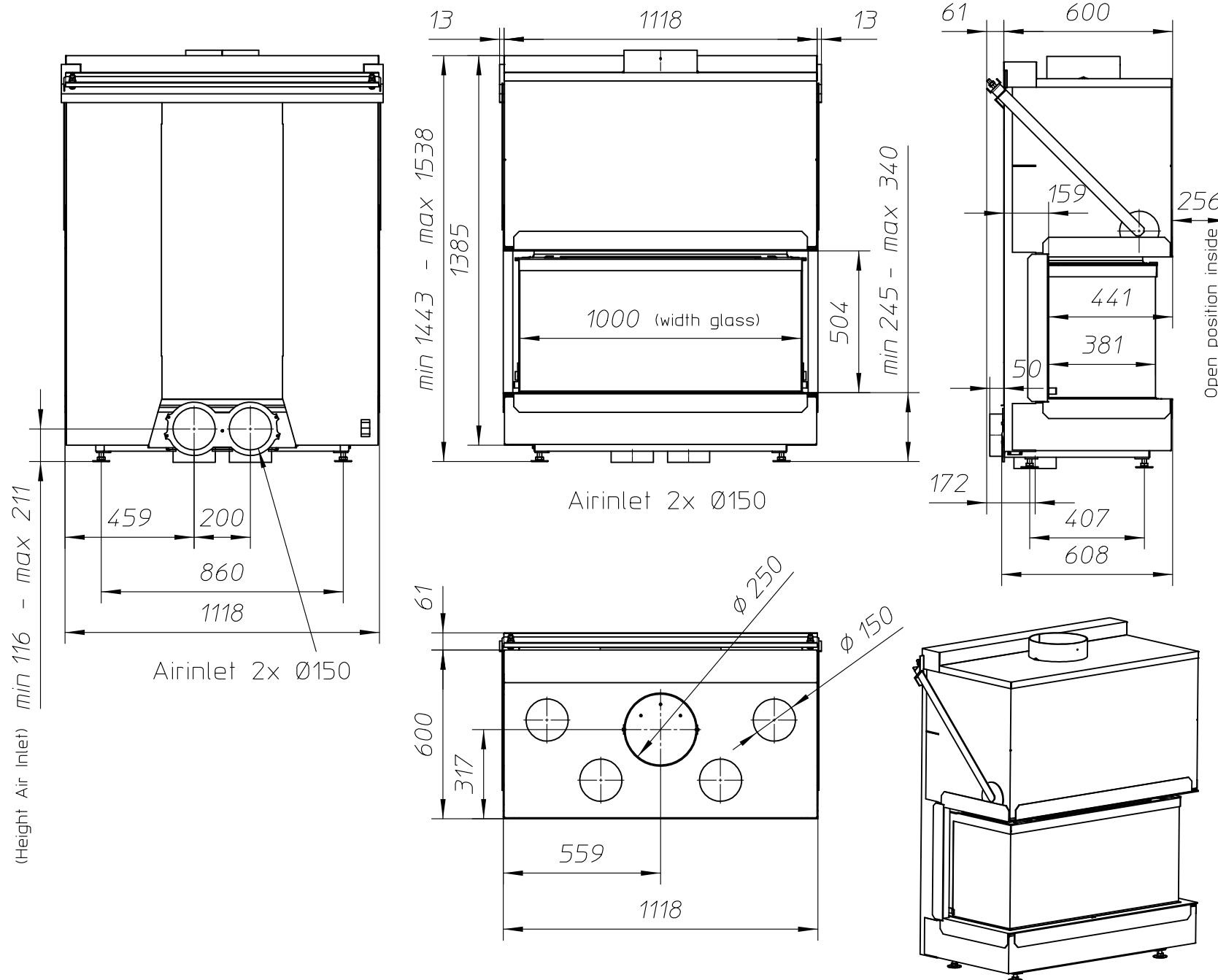
ULTIME D MF 1050-50 WHE 3S V20

Dimensions (mm)

- combustion opening WxH: 1000 x 441 x 504
- external WxDxH: 1144 x 661 x 1443
- fresh air intake: 2 x Ø150
- flue gas outlet: Ø250

Technical Data

- ecolabel: A+
- capacity: 19kW
- efficiency: 84%
- CO (volume with 13%O₂): 0.072%
- dust (volume with 13%O₂): 29.5mg/Nm³
- weight: 320kg
- convection air inlet: min.700cm² (4 x Ø150)
- convection air outlet: min.700cm² (4 x Ø150)



First aid and technical support:

- support@metalfire.eu

- +32 9 261 51 90

scale 1:20

www.metalfire.eu

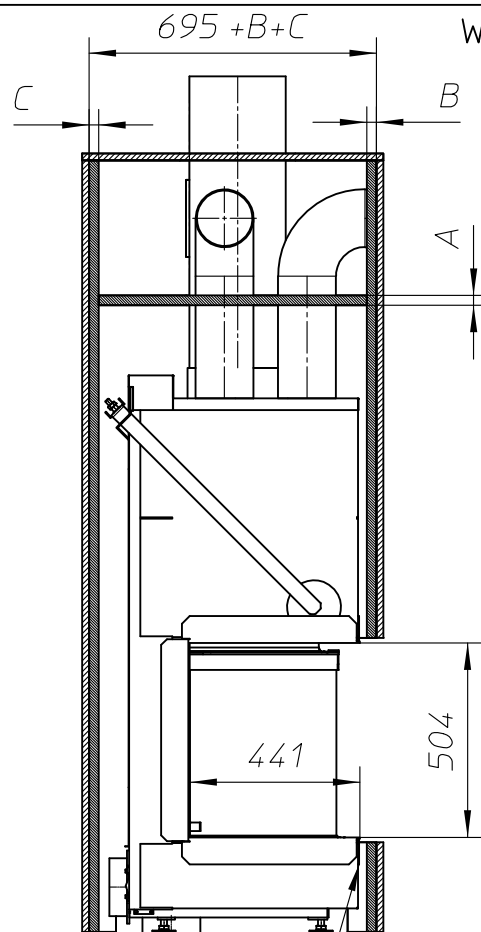
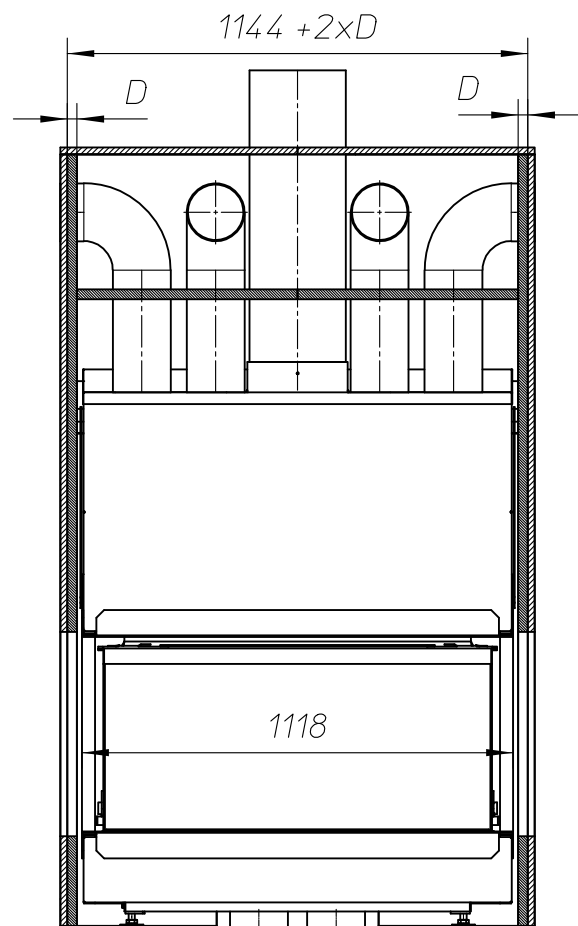
EN 13229

General dimensional tolerances up to 6mm
Metalfire preserves the right to modify specifications without previous notice

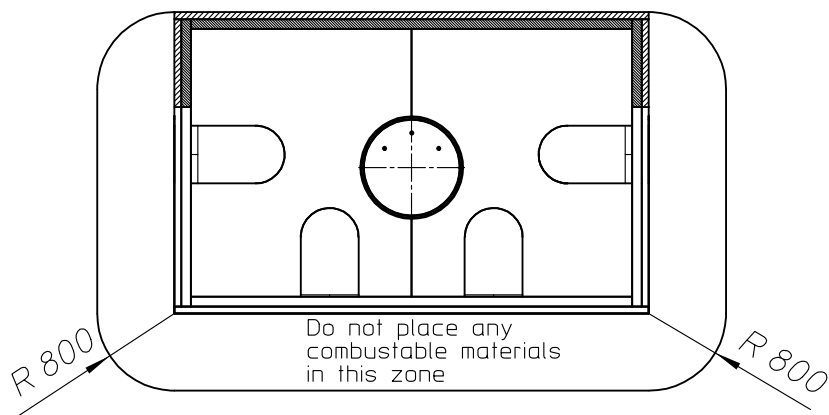
Rev.
A

CE

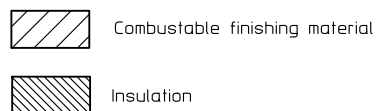
Sheet
1/5



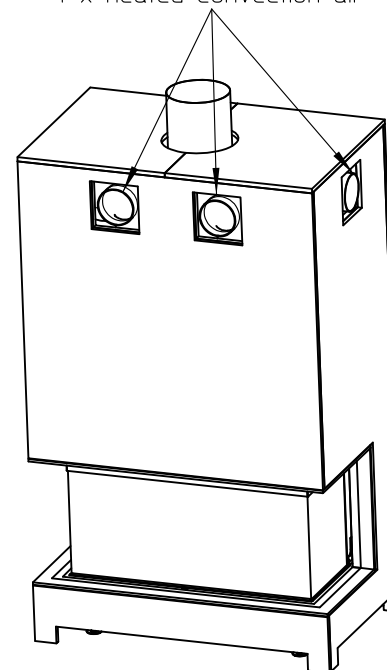
WITHOUT FINISHING FRAME



Min. 13mm between fireplace and insulation



4 x heated convection air



ULTIME D^{Patented}

Metalfire

Technical Document

ULTIME D MF 1050-50 WHE 3S V20

Prescribed insulation thickness (mm)

Combustable finishing material

Metalfire recommended
SILCA T 300
(TC = 0,09 W/mK)

A = 25mm

Non-combustable finishing material

non-combustable
materials
structural building items
EXCLUDED e.g. load bearing walls

A = 0mm

TC = thermal conductivity

NC = non-combustable

First aid and technical support:

- support@metalfire.eu

- +32 9 261 51 90

scale 1:20

Rev.
A

www.metalfire.eu EN 13229

CE

General dimensional tolerances up to 6mm
Metalfire preserves the right to modify specifications without previous notice

Sheet
2/5

WITH FINISHING FRAME 90/10

ULTIME D Patented

Metalfire

Technical Document

ULTIME D MF 1050-50 WHE 3S V20

Prescribed insulation thickness (mm)

Combustable finishing material

Metalfire recommended
SILCA T 300
(TC = 0,09 W/mK)

A = 25mm

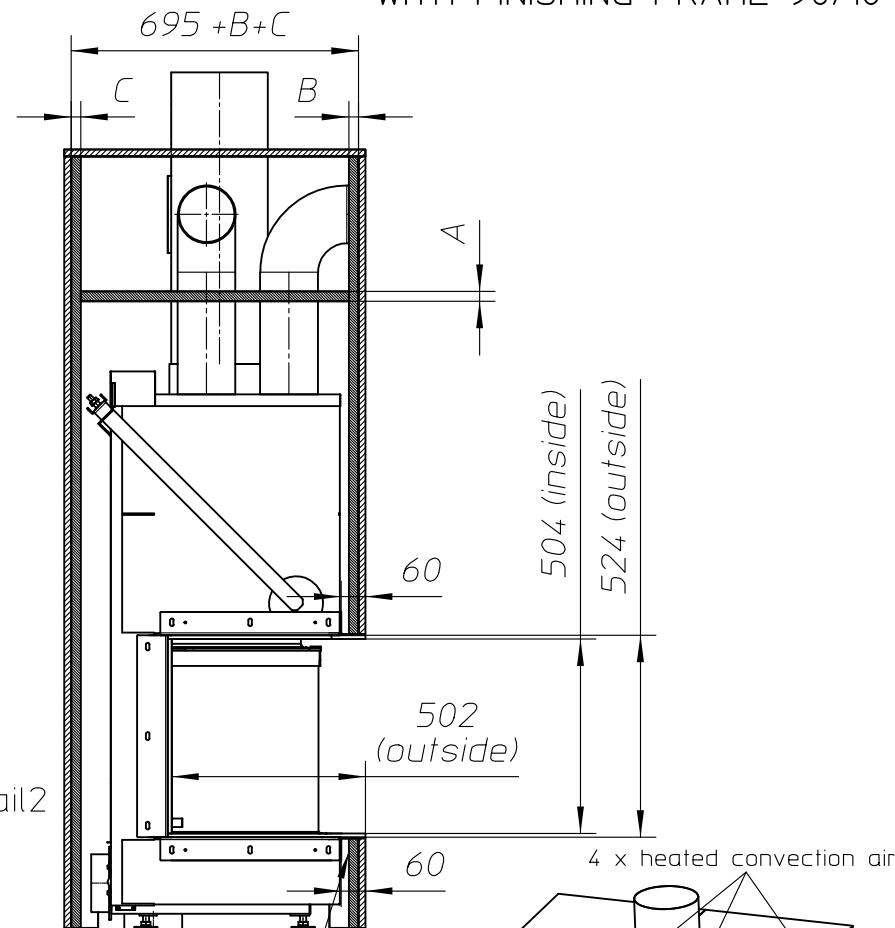
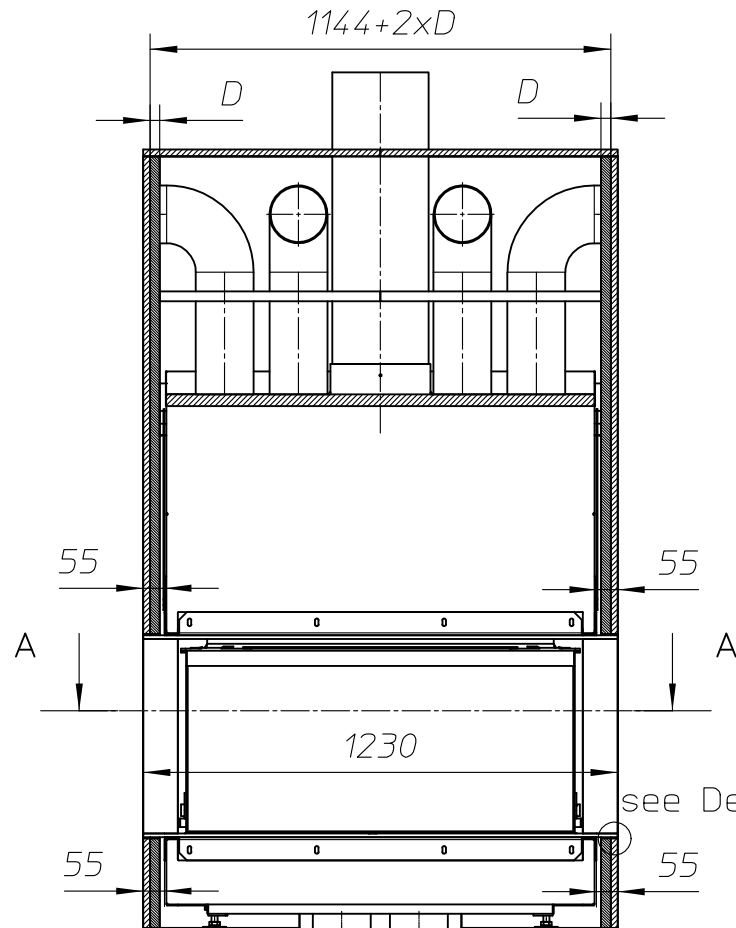
Non-combustable finishing material

non-combustable
materials
structural building items
EXCLUDED e.g. load bearing walls

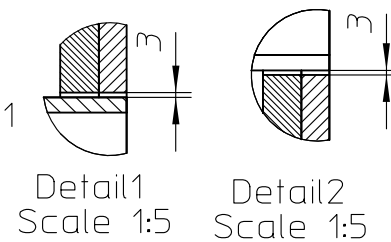
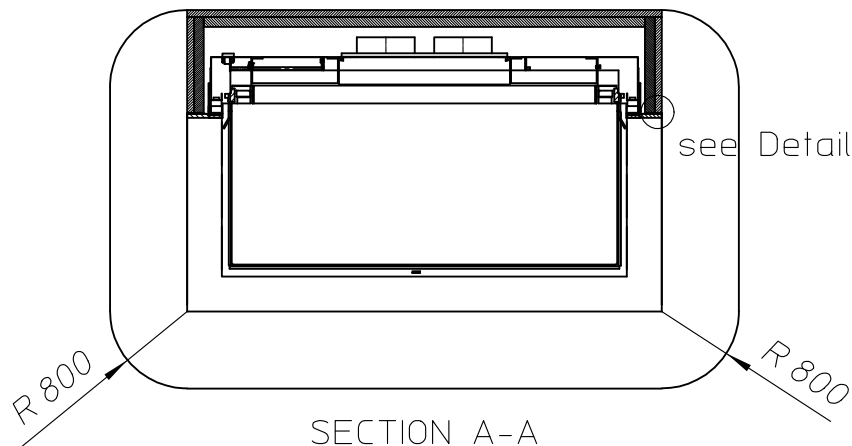
A = 0mm

TC = thermal conductivity

NC = non-combustable



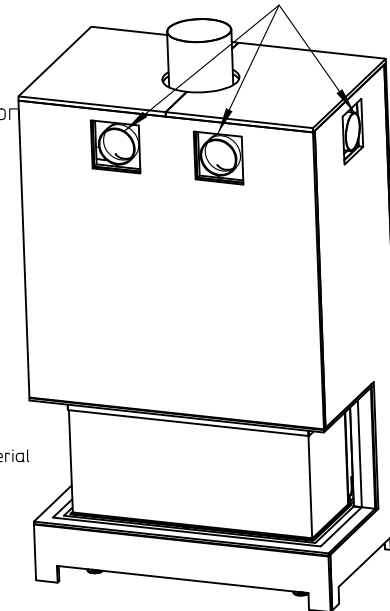
Min. 13mm between fireplace and insulation



Combustable finishing material



Insulation



First aid and technical support:

- support@metalfire.eu

- +32 9 261 51 90

scale 1:20

www.metalfire.eu

EN 13229

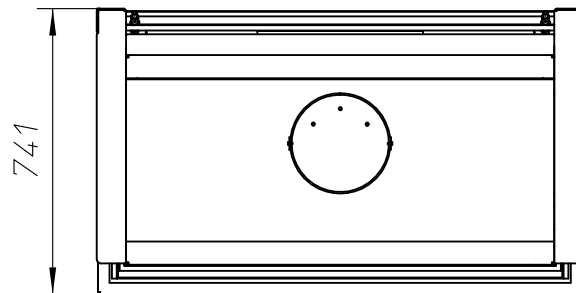
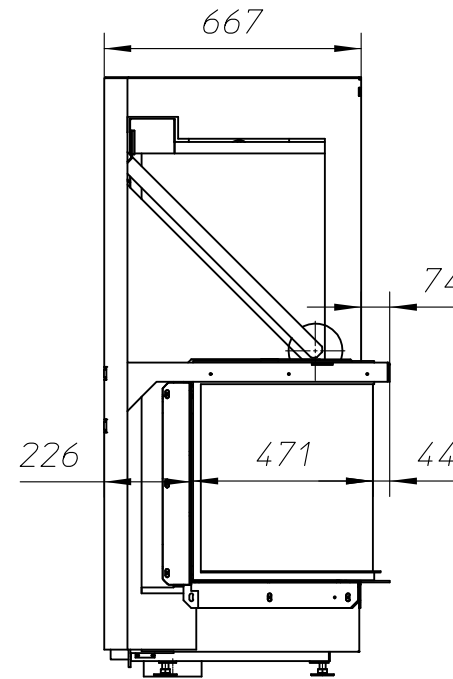
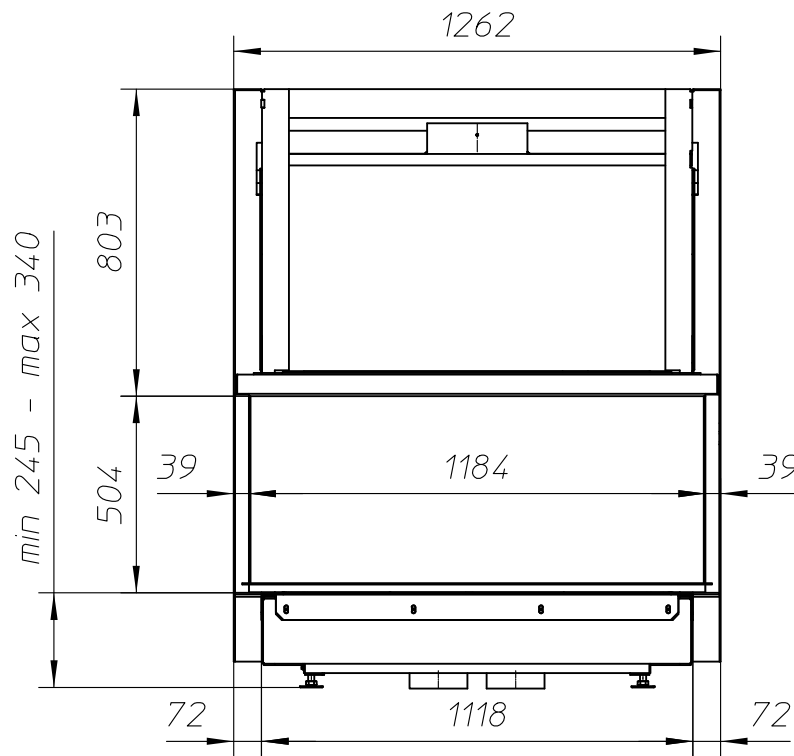
General dimensional tolerances up to 6mm
Metalfire preserves the right to modify specifications without previous notice

Rev.
A

CE

Sheet
3/5

WITH FIRESCREEN - NO FINISHING FRAME



ULTIME D ^{Patented}

Metalfire

Technical Document

ULTIME D MF 1050-50 WHE 3S V20

Dimensions (mm)

- combustion opening WxH: 1000 x 441 x 504
- external WxDxH: 1262 x 741 x 1552
- fresh air intake: 2 x Ø150
- flue gas outlet: Ø250

Technical Data

- ecolabel: A+
- capacity: 19kW
- efficiency: 84%
- CO (volume with 13%O₂): 0.072%
- dust (volume with 13%O₂): 29.5mg/Nm³
- weight: 420kg
- convection air inlet: min.700cm² (4 x Ø150)
- convection air outlet: min.700cm² (4 x Ø150)

First aid and technical support:

- support@metalfire.eu
- +32 9 261 51 90

scale 1:20

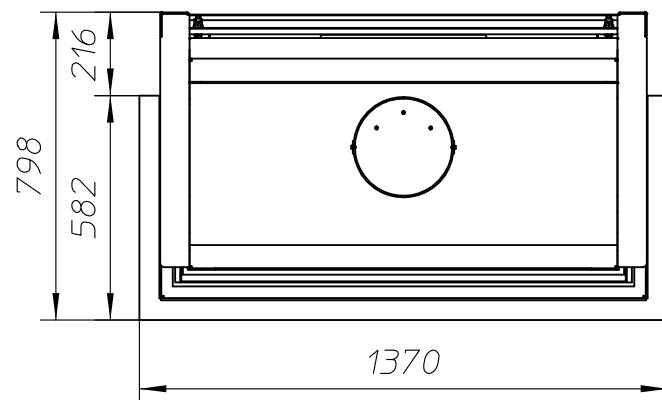
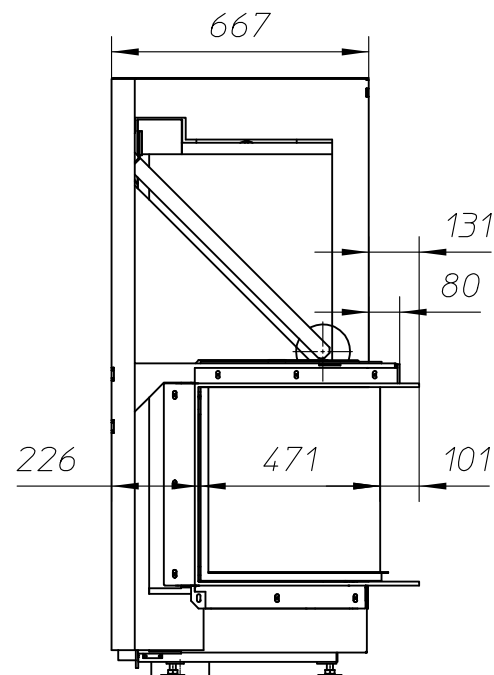
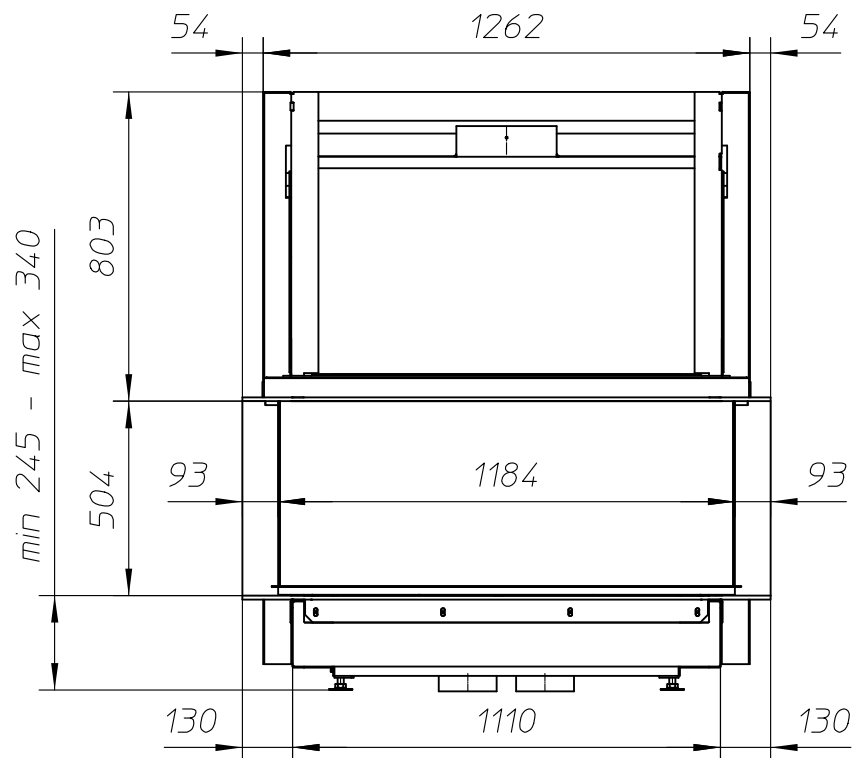
www.metalfire.eu EN 13229

General dimensional tolerances up to 6mm
Metalfire preserves the right to modify specifications without previous notice

Rev.
A

CE

Sheet
4/5



ULTIME D

Patented

Metalfire

Technical Document

ULTIME D MF 1050-50 WHE 3S V20

Dimensions (mm)

- combustion opening WxH: 1118 x 441 x 504
- external WxDxH: 1370 x 798 x 1552
- fresh air intake: 2 x Ø150
- flue gas outlet: Ø250

Technical Data

- ecolabel: A
- capacity: 19kW
- efficiency: 84%
- CO (volume with 13%O₂): 0.072%
- dust (volume with 13%O₂): 29.5mg/Nm³
- weight: 470kg
- convection air inlet: min.700cm² (4 x Ø150)
- convection air outlet: min.700cm² (4 x Ø150)

First aid and technical support:

- support@metalfire.eu
- +32 9 261 51 90

scale 1:20

www.metalfire.eu EN 13229

General dimensional tolerances up to 6mm
Metalfire preserves the right to modify specifications without previous notice

Rev.
A

CE

Sheet
5/5